

# OHR-O'KEEFE MUSEUM OF ART

## EXPANDING TRADITIONS

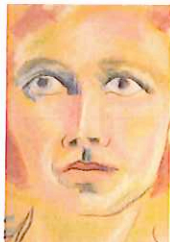
**OPENING RECEPTION**  
December 8, 2012 4:00 – 6:00 pm

386 BEACH BLVD, BILOXI, MS  
228-374-5547 or [www.georgeohr.org](http://www.georgeohr.org)  
Permanent Exhibition of George Ohr Pottery Continues

### WELCOME THE HOLIDAYS ON DECEMBER 8TH!

- 10am-3pm **FREE POTTERY DEMONSTRATION** with Jay Milner
- 12-3pm **BLOCK PRINTING WORKSHOP** with Toni Point/\$20 materials fee
- 2-6pm **FREE 1ST ANNUAL TREE LIGHTING** Artist's OHRnaments will be available for purchase. **A SPECIAL THANKS TO LOWE'S STORE #690 FOR DONATING OUR HOLIDAY TREE**
- 4-6pm **FREE OPENING RECEPTION** with performance by the Magnolia Chamber Orchestra  
All attendees may register to win a bowl by potter Jay Milner!  
Members receive a special shopping discount in the Museum Store

IP Casino Resort Spa Exhibitions Gallery



**DUSTI BONGÉ:**  
**REVISITING THE LEGACY**

December 4, 2012 – June 8, 2013

*Self Portrait, c. 1939*  
Collection of Paul Bongé

Exhibition funded by IP Casino Resort Spa and R&B Feder-Charitable Foundation for the Beaux-Arts

Beau Rivage Resort & Casino Gallery



**LYDIA THOMPSON :**  
**ROOTS, CONNECTIONS & PATHWAYS**

December 11, 2012 – June 1, 2013

*Detail from: Cotton Fields #2*  
Collection of the artist

Funded in part by the Mississippi Arts Commission, a state agency, and the National Endowment for the Arts, a federal agency

Mississippi Sound Welcome Center



**TERRY TJADER:**  
**INGRAINED IN WOOD**

November 27, 2012 – June 1, 2013

*Chinese Tallow Hollow Form, 2009*  
Collection of the artist

Exhibition funded in part by the Mississippi Arts Commission, a state agency, and the National Endowment for the Arts, a federal agency

## OHR-O'KEEFE MUSEUM OF ART

Post Office Box 248  
Biloxi, MS 39533-0248  
[www.georgeohr.org](http://www.georgeohr.org)